



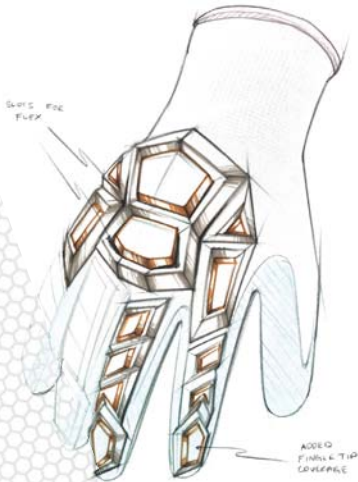
Welding, Safety & Industrial

Black Stallion® Catalog 113





Innovation *by Design.* Protection *by Design.* Value *by Design.*



With over 42 years of manufacturing experience, Black Stallion® Industries continues to lead the market in high-quality, innovation-driven, and value-rich PPE gloves, FR garments and gear. Our commitment to user-centric design, consistent quality, and best-practice manufacturing processes ensures our position as one of the best solutions for distributors in the welding, industrial, and safety markets.

At Black Stallion® Industries, being different is business as usual. From our consistent quality to our expertise in marketing support, our goal is to be the best partner we can be. Our **honesty** will compel you. Our **transparency** will surprise you. And our **creativity** will impress you. Give us a chance and we'll show you how passionate we are about being different.

Superior service means more than shipping orders quickly. At Black Stallion® Industries, our service pledge begins with your trust. With an assigned service team managing your account, you get an unsurpassed level of personalized professional service. Service you can count on. Service you can trust. Every day.



Your Black Stallion® Customer Service and Sales Team

BSX®: The Next Level in Style & Performance

Our BSX® line of welding gear takes the style, quality and innovation of Black Stallion® to the extreme. Eye-catching flame designs and bold colors are combined with enhanced comfort and dexterity elements for a full line of revolutionary gloves, garments, and accessories.



We'll let our customers do the talking...

"Revco has always been our leading provider for safety products. The overall quality and customer service is second to none."

Nick M.

A-OX Welding Supply Co., Inc.



1 MORE INVENTORY. FEWER HEADACHES.

We are committed to maintaining inventory of our core products. You can order with confidence, knowing the product you need is in our warehouse and ready to ship.



2 FASTER DELIVERY.

With dual warehouse and shipping facilities, and a commitment to maintaining inventory, we ship your order faster than other manufacturers. You get the gear you need, when you need it.



3 PROFESSIONAL PERSONAL SERVICE.

That's the best way to describe the best service in the industry. With an assigned team managing your account, you get an unsurpassed level of personalized professional service.



The Black Stallion® Advantage...

By partnering with us, you can leverage our unique advantages to grow your business. With more advantages than you can count on one (gloved) hand, shouldn't you contact us today? Call 800.527.3826.



4 GENUINE VALUE.

Value is more than just a low price. Real value is a unique combination of quality, price, and service. With Black Stallion®, you get consistent quality in materials and construction, pricing programs, and unmatched service. Now that's genuine value.



5 SPIRIT OF INNOVATION.

While everyone claims to be "innovative", Black Stallion® and BSX® products include more unique features that are a testament to our true spirit of innovation. Look for our EXCLUSIVE DESIGN icon for products with exclusive features.



6 ALWAYS UPFRONT. NEVER DIRECT.

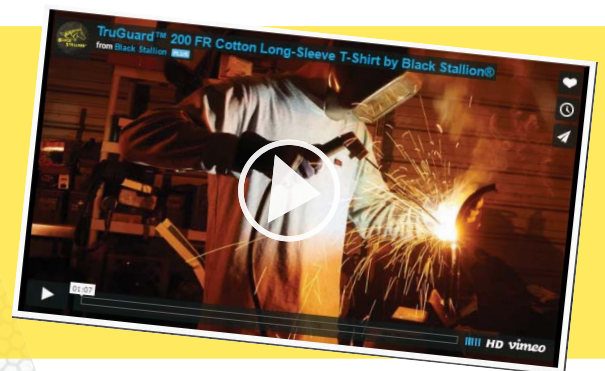
As your premier partner, we never compete with you by selling direct. We believe in the inherent trust established in the manufacturer-distributor relationship.



At Black Stallion®, Innovation is Contagious...

Our innovative products deserve an innovative stage to show them off. We are continually updating and improving our website to provide you with an original cutting-edge experience. Visit today to see what's NEW!

www.BlackStallion.com



Black Stallion® Stick Gloves: Maximum Heat



Elkskin Stick Glove with Nomex® Lined Back

Premium grain elkskin leather stick glove provides superior comfort with natural insulation.

850 S-2XL

750 S-XL Pearl White Version

NOMEX®
Lining



Naturally Insulating Softness



750



850

Durable Kevlar® stitching provides greater protection against sparks and abrasion

Rigid cuff for extra protection against sparks and spatter

Dupont® Nomex® lined back offers extra flame-resistant protection

Thumb strap provides extra reinforcement in a key stress area

Reversed grain palm provides a softer feel against the hand with improved grip

SPOTLIGHT ON...



ELKSKIN LEATHER

Softer and more padded than other leathers, elkskin is the top-shelf choice for our premium stick welding and drivers gloves. Our elkskin leather is **extra thick**, offering superior heat, flame, and abrasion resistance.



BSX® Impact-Resistant Cowhide Stick Glove

High-quality rugged cowhide glove that combines the best of stick welding protection with impact-resistant leather-covered knuckle and finger guards.

GS1715 L-XL



BSX™ Advanced Fit Stick Glove with DragPatch®

Premium grain pigskin palm and split cowhide back provide extreme durability, with an exceptional fit. Exclusive DragPatch® reinforcement offers extra abrasion resistance and insulation. Kevlar® stitched.

BS50 S-2XL



Maximus™ Premium Cowhide Stick Glove with Pigskin Palm

Wool insulated back, extending through the cuff, adds extra heat protection, durability, and comfort. Exclusive DragPatch® reinforcement offers extra abrasion resistance and insulation. Kevlar® stitched.

730 M-2XL



18" Shoulder Split Cowhide Stick Glove

Value-priced long cuff stick glove with cotton lining. Durable Kevlar® stitching provides greater protection against sparks and abrasion.

111R-18 L

Resistance. Maximum Quality. Maximum Value.



Side Split Cowhide Stick Glove with CushionCore™ Liner

High-quality side split cowhide stick glove with wide reinforcements in key stress areas.

320 S-3XL **Now Available up to 3XL!**



Durable Kevlar® stitching provides greater protection against sparks and abrasion

Exclusive CushionCore™ padded liner provides extra heat-blocking comfort

Wide reinforcement strips in key stress areas

Welted seams provide maximum protection for threads



NEW **21" Split Cowhide Stick Glove with RestPatch®**

Durable cowhide long cuff stick glove is ideal for leaning against hot weld surfaces during extended runs. Exclusive RestPatch® provides extra wrist and forearm padding. Kevlar® stitched.

GS1321 M-XL



Exclusive CushionCore™ heat-blocking padded lining provides comfort during sustained welding. Gloves 320, 280, and 113 include CushionCore™.



Select Shoulder Split Cowhide Stick Glove with CushionCore™ Liner

Tough cowhide leather stick glove includes wide palm guard for enhanced heat protection. Exclusive CushionCore™ padded liner provides extra heat-blocking comfort. Kevlar® stitched.

280 L



Select Shoulder Split Cowhide Stick Glove

Dependable cowhide stick glove is cotton lined for comfort. Thumb strap reinforcement provides extra durability. Kevlar® stitched.

110 S-XL



Split Cowhide Stick Glove with Palm Guard

Durable, value-priced stick glove with extra wide palm guard reinforcement and CushionCore™ padded liner. Kevlar® stitched.

113 L



112

Value-Priced Split Cowhide Stick Glove

Economy split cowhide stick glove with cotton lining.

112 L Orange

111S L Gray



111S

Black Stallion® TIG Gloves: Protection that



dragpatch®

TIGSTER® High Performance TIG Welding Glove

Extra-premium grain kidskin offers superior dexterity and finger control.

T50 S-3XL **Now Available up to 3XL!**



Durable Kevlar® stitching provides greater protection against sparks and abrasion

Seamless index finger adds extra dexterity

FR treated cotton back for a snug fit with enhanced protection

Exclusive DragPatch® side reinforcement provides extra insulation and abrasion resistance

Finger sidewalls offer better fit and comfort, with increased mobility

dragpatch®

Exclusive DragPatch® padded reinforcement provides extra abrasion resistance and insulation while the hand is resting on or sliding across a welding surface. Gloves T50, BT50, BT88, 25D-BLK, 24D-BLK, 35KF, 25K, and 24K include DragPatch®.



BSX® Premium Kidskin TIG Welding Glove

Includes all of the superior features of the TIGSTER®, with unique BSX® extreme design. Black leather/FR cotton, with red logo elements. Extra leather protection inside ring and pinky fingers. Hook and loop wrist strap for a customized fit. Kevlar® stitched.

BT50 S-2XL

dragpatch®



BSX® Grain Kidskin & Cowhide TIG Welding Glove

Unique three-finger design provides extreme tactile performance with extra durability. Exclusive RestPatch® provides enhanced wrist padding. Exclusive DragPatch® offers extra insulation and abrasion resistance. Kevlar® stitched.

BT88 S-2XL

dragpatch®



25D-BLK

24D-BLK

Premium Deerskin TIG Glove

High-quality split deerskin TIG glove provides a unique combination of softness and durability. Kevlar® stitching offers greater protection against sparks. Exclusive DragPatch® offers extra insulation and abrasion resistance.

25D-BLK S-XL Standard Cuff

24D-BLK S-XL Short Cuff

dragpatch®

Feels Right. Protection that Fits Right.



Pearl White Premium Kidskin TIG Glove with DragPatch®

Supple and thin premium kidskin leather provides excellent hand and finger control.

dragpatch®

25K XS-2XL Standard Cuff

24K S-XL Short Cuff



24K



25K

Straight thumb design provides better grip

Durable Kevlar® stitching provides greater protection against sparks and abrasion

Exclusive DragPatch® side reinforcement offers extra abrasion resistance and insulation

SPOTLIGHT ON...

KIDSKIN LEATHER

Kidskin is the leather from a young goat. With its well-rounded features, including its adaptability, durability, suppleness, and light weight, kidskin is ideal for TIG gloves. Gloves T50, BT50, BT88, 35KF, 35KE, 25K, and 24K feature kidskin leather.



Pearl White Kidskin TIG Glove with DragPatch®

Premium grain kidskin offers soft and supple comfort and excellent dexterity. Exclusive CushionCore™ lining on back of hand for comfort and extra protection. Kevlar® stitching provides greater protection against sparks and better abrasion resistance. Seamless index finger provides good hand control.

35KF S-2XL



Pearl White Value-Priced Kidskin TIG Glove

High-dexterity grain kidskin, with a seamless index finger for good hand control. Kevlar® stitching provides greater protection against sparks and better abrasion resistance. Unlined design maintains finger nimbleness.

35KE S-XL



Value-Priced All-White Grain Goatskin TIG Glove

Durable high-dexterity glove with thicker grain goatskin. Kevlar® stitching provides greater protection against sparks and better abrasion resistance.

25G S-XL



Ultimate Comfort and Dexterity



BSX® Premium Pigskin & Cowhide MIG Glove

Premium grain pigskin palm and cowhide back offer a value-conscious combination of dexterity and durability.

BM88 S-3XL

Now Available up to 3XL!

dragpatch®

restpatch®



Exclusive RestPatch® provides enhanced wrist padding

Exclusive DragPatch® offers extra hot zone protection

Kevlar® stitching for spark and abrasion resistance

Fully lined and padded pigskin palm for comfort and high tactile performance

MightyMIG® Premium Deerskin MIG Glove

Reversed grain deerskin provides premium comfort and dexterity. The CushionCore™ lining on back of hand offers a layer of heat-blocking comfort. Kevlar® stitching provides spark and abrasion resistance.

39 XS-XL



Premium Goatskin MIG Glove with DragPatch®

Ultra-soft premium goatskin provides lightweight protection, with advanced finger control and dexterity. Padded DragPatch® for hot zone coverage. Seamless index finger for excellent trigger control. Lined palm provides extra defense from heat and Kevlar® stitching provides spark and abrasion resistance.

GM1510 S-2XL

dragpatch®

MightyMIG® Premium Grain Pigskin MIG Glove

Premium grain pigskin construction offers lightweight, supple protection for MIG welders. CushionCore™ lining on back provides a layer of heat-blocking comfort. Kevlar® stitching provides spark and abrasion resistance.

39CHMP S-XL



Premium Grain Cowhide MIG Glove

Grain cowhide offers maximum durability with sufficient dexterity for MIG welding applications. Unlined to maintain finger control. Seamless index finger for extra dexterity where it's needed most. Kevlar® stitching provides greater protection against sparks and abrasion resistance.

25 S-XL Premium Cowhide

25E S-XL Standard Cowhide

Lightweight Pigskin MIG Glove

Lightweight, supple protection in a classic design for MIG welders. Seamless index finger provides enhanced feel and control. Kevlar® stitching adds durability and abrasion resistance.

26 S-XL

High Performance Hand Protection



ToolHandz® PLUS Original Mechanics Glove

Our original, and still best-selling, mechanics glove features lightweight and durable synthetic leather with reinforced palm and fingertips. Ideal for general hand protection.

- 99PLUS-BLK** S-3XL Black Now Available up to 3XL!
- 99PLUS-BLUE** S-2XL Blue
- GX1215-HG** M-2XL Hi-Vis



99PLUS-BLUE



GX1215-HG



99PLUS-BLK

Strap cuff for a secure fit

Lightly padded spandex back provides a comfortable and snug fit

Durable synthetic leather palm with reinforced contact zones



ToolHandz® Anti-Impact Glove with Vibration-Dampening Palm

- Padded vibration-dampening palm for improved comfort.
- ShokBlok™ 2 rubber guards across the back of hand offer light impact protection.
- Exclusive padded BumpPatch™ offers extra side-hand comfort and abrasion resistance.

GX100 M-2XL



ToolHandz® ShokBlok™ Performance Mechanics Glove

- Synthetic leather vibration-dampening palm.
- ShokBlok™ rubber guards on the back of the fingers offer light impact resistance.
- Sure-grip reinforcements.
- Spandex back.

98SB M-2XL



NEW

ToolHandz® Hi-Vis Anti-Impact Mechanics Glove

- Designed for the harsh conditions of the Oil & Gas industry.
- Great glove for any application requiring impact resistance.
- Full-coverage padding on the back of hand.
- Impact flex guards on each finger provide quality protection.

GX1010 M-2XL



FlexHand™ Value-Priced Mechanics Glove

- Synthetic leather palm with snug spandex/neoprene back.
- Reinforced palm.

19FX-BLK S-2XL



FlexHand™ Grain Goatskin Mechanics Glove

- Grain goatskin palm for excellent dexterity, with superior abrasion resistance.
- Generous leather reinforcements for long-lasting wear.
- Spandex back provides a comfortably snug fit.

GX3020 S-2XL



FlexHand™ Grain Cowhide Value-Priced Mechanics Glove

- Grain cowhide palm provides enhanced dexterity and hand control.
- Cowhide also offers superior durability.
- Heavy-duty spandex back for a durable and snug fit.

19C M-XL



Naturally Insulating Softness

Premium Elkskin Drivers Glove

Premium grain **extra-thick** elkskin leather provides unsurpassed softness.

17 S-XL

17A S-XL Pull Strap Cuff

SPOTLIGHT ON...



ELKSKIN LEATHER

Softer and more padded than other leathers, elkskin is the top-shelf choice for our premium stick welding and drivers gloves. Our elkskin leather is **extra thick**, offering superior heat, flame, and abrasion resistance.



17A



17

Keystone thumb design provides exceptional articulation and comfort

Shirred elastic wrist offers a snug and secure fit

Elkskin leather is the top-shelf choice for premium drivers gloves

Inside seam construction protects threads from abrasion and wear



Premium Grain Deerskin Drivers Glove

Ultra-soft, supple, and comfortable deerskin leather. Shirred elastic wrist offers a snug and secure fit. Keystone thumb design.

i17 S-XL



Premium Cowhide Drivers Glove with Double Palm

Double palm reinforcement adds durability and comfort, with enhanced leather protection. Inside seam and keystone thumb.

91DP S-2XL



Performance Pigskin Drivers Glove

Durable pigskin construction. Ergonomic keystone thumb for exceptional articulation.

9P S-XL



93

94

Classic Grain Cowhide Drivers Glove

Durable grain cowhide in a classic design with ergonomic keystone thumb and elastic wrist.

93 S-2XL Keystone Thumb

94 S-XL Straight Thumb

Hand Fatigue. Increase Profit Margins.

Versatile Grain Cowhide Palm Drivers Glove

Ideal for spot welding, the 97K combines a grain cowhide palm for durability with a value-conscious split cowhide back.



97K S-3XL Outside Seam **Now Available up to 3XL!**

97SW S-2XL Reinforced Palm; Wing Thumb

97 S-XL Without Kevlar® Stitching

97CR M-2XL Kevlar® Lined (ANSI Cut Level 2);
ARC Flash Protection (ATPV=22 cal/cm²)



Elastic wrist for a snug and secure fit

Durable Kevlar® stitching provides greater protection against sparks and abrasion

Ergonomic keystone thumb for exceptional articulation and comfort

SPOTLIGHT ON...

ANSI CUT-RESISTANCE LEVEL 2

Based on ANSI/ISEA 105 Standards, Level 2 provides protection from low cut hazards found in construction, automotive, assembly, packaging, and some masonry applications. Our **97CR** glove provides Cut Level 2 protection.



Premium Grain Cowhide Drivers Glove

Premium grain cowhide offers outstanding durability. Classic design with shirred cuff for a snug fit. Inside seam protects threads. Keystone thumb.

91 S-XL



Premium Grain Goatskin Drivers Glove

Soft and supple premium grain goatskin offers excellent dexterity, with superior abrasion resistance. Inside seam construction protects threads from wear and abrasion.

9G S-XL Keystone Thumb

9GE S-XL Straight Thumb



Value-Priced Grain Pigskin Drivers Glove

Performance pigskin offers lightweight, resilient general protection.

9PB S-XL



Value-Priced Cowhide Drivers Glove


Economy cowhide leather keeps the price low and the value high. Double stitched for extra durability. Wing thumb design.

GD1611 M-2XL

GD1614 M-2XL Kevlar® Stitching for Spot Welding Applications

Hand Protection from an Arc Flash Incident

See page 20 for **NEW** ARC-Rated Hi-Vis FR Cotton Jacket and Vest




ARCSTER™ ARC-Rated FR Cotton & Kidskin Glove

Soft kidskin palm and FR cotton back provide comfort, dexterity and arc flash protection. Exclusive DragPatch® reinforcement offers padded insulation and abrasion resistance. Extended 12" length for enhanced wrist coverage. ATPV = 25.7 cal/cm²

A60 S-2XL

ARC 2 **ATPV** 25.7 cal/cm² *dragpatch*®



Cowhide ARC-Rated Cut-Resistant Drivers Glove

Grain cowhide palm and split cowhide back with Kevlar® lining and stitching. Provides ANSI Cut Level 2 protection and ARC 2 protection. ATPV = 22 cal/cm².

97CR M-2XL

ARC 2 **ATPV** 22 cal/cm² **ANSI CUT LEVEL 2**

LEATHER PALM WORK GLOVES

Hard Working Gloves for Hard Workers



Classic Split Cowhide Work Glove

Shoulder split cowhide leather palm with shirred elastic wrist for a snug fit. Leather knuckle strip provides added protection.

6B L Heavier Shoulder Split
5B S-2XL Standard Shoulder Split



Padded Double Palm Split Cowhide Work Glove

Shoulder split cowhide leather with reinforced padded double palm for improved comfort and performance. Rubberized short cuff.

6DP L



Side Split Cowhide Work Glove with Patched Palm

Side split cowhide leather includes patched palm for added durability and palm protection. Leather knuckle strip. Rubberized short cuff.

5Y L



Shoulder Split Cowhide Hi-Vis Work Glove

Shoulder split cowhide leather palm with Lime Green fabric back. Lined palm. Reflective knuckle strip offers enhanced high-visibility protection. Rubberized short cuff.

5B-LIM L



Standard Split Cowhide Work Glove

Standard split cowhide leather palm with starched gauntlet cuff to protect shirt cuffs and wrist. Leather knuckle strip provides added protection.

5BE L



Premium Shoulder Split Cowhide Work Glove with Full Leather Back

Select shoulder split cowhide is an economical leather option. Full leather hand coverage offers extra protection.

5FB L Short Cuff
8FB L Long Cuff



Rugged Split Cowhide Work Glove with Full Leather Back

Side split cowhide provides rugged performance. Full leather hand coverage offers extra protection. Kevlar® stitching for enhanced durability and abrasion resistance.

5F L Short Cuff
5A S-XL Rubberized Short Cuff; Canvas Back

AccuFlex™ Dipped Gloves: Get a Better Grip on Value

NEW



AccuFlex

AccuFlex™ Cut & Impact Resistant Nitrile-Coated Knit Glove

Includes "dual hazard" protection with both ANSI Cut Level 3 protection and impact resistance.

GR4140 S-XL



Textured nitrile palm provides extra grip with superior durability and abrasion resistance

Extended cuff for protection through the wrist area

Cut resistant HPPE knit blend provides ANSI Cut Level 3 protection

Thermoplastic Rubber (TPR) pads protect back of hand, while maintaining flexibility and dexterity



AccuFlex™ Cut Resistant Nitrile-Coated Glove

- 13-gauge high-performance polyethylene (HPPE).
- Rated for both ANSI Cut Level 3 and EN388 Cut Level 5 protection.
- Palm and fingers are coated with tough textured nitrile for outstanding durability and enhanced chemical resistance.

GR4130 S-XL



AccuFlex™ Cut Resistant Latex-Coated Glove

- Constructed of 10-gauge Kevlar® knit.
- Rated for both ANSI Cut Level 3 and EN388 Cut Level 5 protection
- Palm and fingers are coated with resilient latex rubber.
- Crinkle texture ensures grip performance.

GR1135 S-XL



AccuFlex™ Nitrile Foam-Coated Nylon Glove

- 13-gauge high-dexterity nylon knit.
- Palm coated with tough nitrile foam for excellent durability, extreme grip, and better chemical resistance.

GC2036 S-XL



AccuFlex™ Nitrile-Coated Nylon Glove

- 13-gauge knit construction provides superior dexterity.
- Palm and fingers include smooth nitrile coating for excellent grip and enhanced chemical resistance.

GC2030 S-XL

CHORE GLOVES



AccuFlex™ Latex-Coated Knit Glove

- 10-gauge cotton/poly knit construction.
- Palm and fingers are coated with resilient latex rubber.
- Crinkle texture ensures grip performance.

GC1135 S-XL



2300 2300T

Atlas™ Rubber-Coated Cotton/Poly String Knit Glove

- Ergonomic curved design.
- Flexible coating offers comfort and versatility.
- Seamless liner.

2300 S-XL Rubber Coated

2300T M-XL Latex Coated Thermal



Economy Latex-Coated Cotton/Poly Knit Glove

- Value-priced cotton/polyester string knit.
- Latex coated.

2300EE L



Brown Jersey Glove

- Basic 9 oz. cotton jersey.
- Knit wrist.

1109 S, L

Warm & Comfortable Protection



ToolHandz® Pigskin Insulated Winter Mechanics Glove

- Premium grain pigskin palm.
- Spandex/neoprene back provides a snug fit.
- Thinsulate™ insulation for warmth and comfort.

99ACE-PW S-2XL

Thinsulate
INSULATION



Fleece Insulated Cowhide Winter Drivers Glove

- Grain cowhide provides durability, with natural insulation properties.
- Fleece insulation keeps hands warm.

93W S-2XL



ToolHandz® Water Resistant Hi-Vis Anti-Impact Winter Glove

- Synthetic leather palm is reinforced for long-lasting protection.
- Winter lining provides warmth and water resistance.
- Storm cuff keeps out the cold and wind.
- Impact guards on fingers and full-coverage back pad.

GW1010 M-2XL



ToolHandz® Water Resistant Hi-Vis Winter Mechanics Glove

- Synthetic leather palm with hi-vis spandex back.
- Multiblend™ insulation keeps hands warm and comfortable.
- Water resistant lining.
- Protective guards and padding offer light impact protection.

GW101 M-2XL



FuzzyHand™ MAX2 Pigskin Water Resistant Winter Glove

- Premium grain pigskin palm, reinforced for durability.
- Multiblend™ insulation and polar fleece back for warmth and comfort.
- Water resistant lining.

15FH-MAX2 S-XL



FuzzyHand™ Split Cowhide & Polar Fleece Winter Glove

- Split cowhide palm.
- Warm polar fleece back.

15FH-GRAY S-2XL



Premium Grain Pigskin Winter Drivers Glove

- Lightweight grain pigskin for supple hand protection.
- Fleece insulation keeps hands warm and comfortable.

9PW S-2XL



Premium Elkskin Winter Drivers Glove

- Premium grain **extra-thick** elkskin leather provides unsurpassed softness.
- Thinsulate™ insulation helps to keep hands warm and comfortable.

17T S-XL Elkskin

i17T S-XL Deerskin

Thinsulate
INSULATION



Grain Pigskin Palm Winter Work Glove

- Classic leather palm work glove.
- Multiblend™ insulation.

5LP S-XL



Performance Fleece Lined FR Twill Winter Liner

- FR cotton twill shell offers enhanced flame-resistant protection.
- Thick layer of fleece lining provides extra warmth.
- Extended neck coverage.
- Includes pockets to hold heat packs.

WL350 One Size

BSX®: The Next Level in Performance



BSX® FR Cotton Contoured Welding Jacket

Reaching a new level in innovation, the BSX® welding jacket utilizes a modern design to create a better fitting, better looking, and more comfortable protective garment. Contrasting flame graphics and piping add a stylish touch.

- BX9C** S-5XL Black
- BXR9C** S-5XL Royal Blue
- B9C** S-5XL Black without Flame Graphic

Welder's collar provides enhanced neck protection

9 oz. FR-treated cotton for lightweight protection from heat, sparks, and spatter

Convenient snap front and wrists

Zippered inside pocket



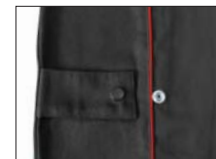
BX9C



BXR9C

B9C

Adjustable waist straps for a more fitted and stylish appearance



Extended length front offers extra protection from sparks and spatter



BSX® Kevlar® Knit FR Sleeves

18" Kevlar® knit sleeves provide ANSI Cut Level 4 protection and flame resistance. Double layer construction offers increased durability and enhanced protection. Thumb notch keeps sleeves from sliding off.

BX-KK-18T 18" Length



BX9-19S-BK

BX9-19S-RB

BSX® FR Cotton Sleeves

19" 9 oz. flame-resistant cotton sleeves. Wide upper arm elastic and elastic wrist cuff ensure a secure and comfortable fit. Reinforcement layer for durability.

BX9-19S-BK 19" Length Black with Red Flame Graphics

BX9-19S-RB 19" Length Black with Royal Blue



BW9C



LS50

AngelFire® Women's FR Cotton Welding Jacket

Designed specifically for women, 9 oz. FR-treated brushed cotton welding jacket in a warm chocolate brown color. Stand-up welder's collar for added protection. Adjustable cuff and waist straps.

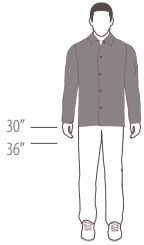
BW9C XS-XL Chocolate Brown

AngelFire® Women's Stick Glove

LS50 XS-XL



TruGuard™ 200 by Black Stallion® – The



TruGuard™ 200 FR Cotton Welding Jacket

With its traditional look and fit, our classic 9 oz. FR cotton welding jacket offers reliable protection for light welding applications. 30" length.

- | | | | |
|----------------|--------------------------|----------------|----------------------|
| F9-30C | S-6XL Green | FN9-30C | S-5XL Navy |
| F09-30C | S-5XL Orange | FR9-30C | S-4XL Red |
| FL9-30C | S-4XL Lime Green | F2-30C | S-4XL Green (12 oz.) |
| F9-36C | S-4XL Green (36" length) | FB2-30C | S-4XL Brown (12 oz.) |



F09-30C FL9-30C FN9-30C FR9-30C FB2-30C



9 oz. FR-treated cotton for protection from heat, sparks, and spatter

Convenient snap front and wrists

Scribe pocket holds welding pencils, soapstone, and paint markers



Inside pocket holds and protects small items



F9-30C



F9-20B

TruGuard™ 200 FR Cotton Cape Sleeves

9 oz. flame-resistant cotton sleeves. Snap front and wrists. Scribe pocket.

F9-21CS S-4XL Green



TruGuard™ 200 FR Cotton Welding Bib

Wear with F9-21CS Cape Sleeves for complete FR protection. Comfortable 9 oz. flame-resistant treated cotton. Adjustable waist strap for the perfect fit.

F9-20B 20" Length Bib Green

F9-24B 24" Length Bib Green



SPOTLIGHT ON...



MORE COLORS. MORE STOCK.

The TruGuard™ 200 FR Cotton Welding Jacket is part of our "MORE INVENTORY" commitment. We have more inventory of more colors ready for immediate delivery. We're here when you need us.



Value Choice for FR Cotton Garments

ASTM F1506

TruGuard™ 200 FR Cotton Coverall

Comfortable 9 oz. flame-resistant treated cotton for protection from heat, sparks, and spatter. 32" inseam.

- F9-32CA/PT** S-5XL Green
- FN9-32CA/PT** S-5XL Navy
- FN9-32CA/PT/RTT** S-5XL Navy with FR Reflective Tape



FN9-32CA/PT

FN9-32CA/PT/RTT



"X" pattern identifies when wearer's back is turned



Blank name badge for personalization and identification

Inside adjustable waistband for a better fit

Pass-through side pockets

9 oz. FR-treated cotton for protection from heat, sparks, and spatter

F9-32CA/PT

SPOTLIGHT ON...



TruGuard™ 200

TruGuard™ 200 by Black Stallion® is the value choice for FR garments. All TruGuard™ 200 garments are constructed of durable FR-treated cotton and meet ASTM F1506 standards. Tested to retain protection through 50 washes.



TruGuard™ 200 FR Cotton Work Pants

9 oz. flame-resistant treated cotton. Hip and rear pockets. Zipper fly.

- F9-32P** 32"-48" waist (even sizes), 32" inseam Green

ASTM F1506



F9-18S

TruGuard™ 200 FR Cotton Sleeves

9 oz. flame-resistant cotton sleeves. Elastic wrists and biceps for a secure fit. Sold by the pair.

- F9-18S** 18" Length Green

- F9-23S** 23" Length Green

ASTM F1506



F9-218S

TruGuard™ 200 FR Cotton Sleeves with Cuff Elastic Bands

9 oz. flame-resistant cotton sleeves with cuff elastic on wrists and biceps for an extra secure fit. Sold by the pair.

- F9-218S** 18" Length Green

- F9-223S** 23" Length Green

ASTM F1506

TruGuard™ 200 – Tru Protection. Tru Quality. Tru Value.



TruGuard™ 200 FR Cotton Full-Zip Hooded Sweatshirt

The TruGuard™ 200 FR Hooded Sweatshirt provides warmth and FR protection for a variety of industrial and welding applications. 100% FR treated cotton.*

JF1331-BK M-4XL Black

JF1332-OR M-4XL Orange with 2" Reflective Tape

Welder's collar provides additional protection against sparks and wind



Removable hood for jobsite safety

Convenient scribe pocket



Covered flaps on pockets and zipper front help keep sparks out



JF1332-OR



JF1331-BK

*For welders, the FR Hooded Sweatshirt is intended to be used as part of a layered warmth/FR system. It is recommended that a welding jacket be worn over the Hooded Sweatshirt for maximum protection when welding.



FS7-KHK



FS8-DNM



FTL6-ORA

FTL6-NVY

FTL6-LIM

FTL6-GRY

TF1211-LM

TF1211-OR

TruGuard™ 200 FR Cotton Work Shirt

Classic and comfortable styling in 7 oz. flame-resistant treated cotton. Generously cut for a comfortable fit. Convenient chest pockets and durable metal snaps.

FS7-KHK S-4XL Khaki

FS8-DNM S-4XL Denim (8 oz.)



TruGuard™ 200 FR Long-Sleeve T-Shirt

Comfortable 6 oz. flame-resistant treated cotton makes this shirt an excellent secondary source of protection under a welding jacket. Stitched with FR aramid thread for enhanced protection and durability. ARC rated at 10 cal/cm².

FTL6-GRY S-3XL Heather Gray

FTL6-NVY S-3XL Navy

FTL6-LIM S-3XL Lime Green

FTL6-ORA S-3XL Orange

TF1211-OR L-3XL Orange with 2" FR Reflective Tape

TF1211-LM L-3XL Lime Green with 2" FR Reflective Tape



TruGuard™ 300 – Durable FR & ARC-Rated Apparel

TruGuard™ 300 Deluxe FR Cotton Coveralls

Generously sized, durable 9 oz. flame-resistant treated cotton. Adjustable elastic waistband for a better fit. Meets OSHA 1910.269 and 1910.132.

- CF2215-ST** S-5XL Stone Khaki
- CF2215-NV** S-5XL Navy
- CF2215-GY** S-5XL Gray
- CF2215-RB** S-5XL Royal Blue
- CF2216-ST** S-5XL Stone Khaki with 2" Reflective Tape
- CF2216-NV** S-5XL Navy with 2" Reflective Tape
- CF2216-GY** S-5XL Gray with 2" Reflective Tape
- CF2216-RB** S-5XL Royal Blue with 2" Reflective Tape



Also available in cooler, lighter weight 7 oz. FR-treated cotton.

- CF2117-ST** S-5XL Stone Khaki
- CF2117-NV** S-5XL Navy



CF2216-RB CF2215-GY CF2215-NV

- FR hook-and-loop closures
- Chest pockets with protective flaps and pencil slots
- Gusseted underarms provide greater freedom of movement
- 2-way FR zipper with protective flap
- Large hip pockets with coin catch



Easy Cooling Pipe Wrap

Innovative wrap helps control cool down to reduce weld cracking. FR canvas outer layer with 18 oz. fiberglass lining. Adjustable sizing.

- AP1010-0D-0608** Fits 6" - 8" Pipes
- AP1010-0D-1012** Fits 10" - 12" Pipes
- AP1010-0D-1420** Fits 14" - 20" Pipes
- AP1010-0D-2228** Fits 22" - 28" Pipes
- AP1010-0D-3036** Fits 30" - 36" Pipes

CF2216-ST

SPOTLIGHT ON...



TruGuard™ 300

TruGuard™ 300 by Black Stallion® is the versatile choice for FR garments. All TruGuard™ 300 garments are constructed of durable FR-treated cotton and are tested to retain protection through 100 washes. They also meet or exceed industry standards for FR and Arc Flash.



WF2110-ST WF2112-ST

TruGuard™ 300 FR Cotton Work Shirt

Durable 7 oz. flame-resistant treated cotton is ARC rated and OSHA compliant. Chest pockets with flaps and pencil slot. Curved hem provides a generous, comfortable fit and enhanced protection when shirt is untucked. Meets OSHA 1910.269 and 1910.132.

- WF2110-ST** S-4XL Stone Khaki
- WF2112-ST** S-4XL Stone Khaki with 2" Reflective Tape



TruGuard™ 300 FR Cotton Work Pants

FR treated 9 oz. cotton; stitched with FR aramid thread for durability and enhanced protection. Zipper fly with FR button closure. Hip and rear pockets. Meets OSHA 1910.269 and 1910.132.

- PF2220-NV** 32" - 48" waist (even sizes), 32" inseam Navy
- PF2221-NV** 32" - 48" waist (even sizes), 34" inseam Navy



TruGuard™ 300 FR Denim Jeans

FR treated 14 oz. cotton denim; stitched with FR aramid thread for durability and enhanced protection. Relaxed fit with classic 5-pocket jean design. Meets OSHA 1910.269 and 1910.132.

- FD14-32P** 32" - 48" waist (even sizes), 32" inseam Denim
- FD14-34P** 32" - 48" waist (even sizes), 34" inseam Denim



Be Seen. Be Safe. Be Protected.



CableNotch™
Pass-Through



TruGuard™ 200 Hi-Vis Welding Jacket with FR Reflective Tape

- 9 oz. flame resistant cotton in Hi-Vis Orange or Lime with 2" reflective tape to maximize visibility.
- "X" reflective pattern shows others when wearer's back is turned.
- CableNotch™ on back allows for pass-through of fall protection harness.
- Inside pocket and scribe pocket.
- Snap front and wrists.

JF1012-OR S-5XL Orange
JF1012-LM S-4XL Lime Green



"X" shows others
when wearer's back
is turned



TruGuard™ 600 Hi-Vis Class 3 High-Performance FR Welding Jacket

- 9 oz. high-performance fabric is inherently flame-resistant to resist sparks and spatter, with reduced pinholing.
- Welder's collar provides additional neck protection.
- "X" reflective pattern shows others when wearer's back is turned for improved safety.
- CableNotch™ on back allows for pass-through of fall protection harness.
- Inside pocket and scribe pocket.

JF4312 M-5XL



Fall Protection
Harness Access Slot



NEW TruGuard™ 250 Hi-Vis Class 3 FR Cotton Jacket

- Unique 9 oz. FR-treated 100% cotton is certified to ANSI/ISEA 107-2015.
- Reflective striping is ANSI/ISEA 107-2015 Type R Class 3 compliant.
- NFPA 70E and ASTM F1506 compliant.
- 32" extended front offers extra FR protection.
- Welder's collar helps protect neck from sparks and UV rays.
- Access slot on back for fall protection harness pass through.
- Concealed snap front and snap wrist closures.

JF1117 S-4XL



FIRST
in the Industry!

- ✓ 100% FR Cotton
- ✓ ANSI Hi-Vis Compliant
- ✓ Value-Priced

Available Now!



Company logo
screen print
available



NEW TruGuard™ 250 Hi-Vis Class 2 FR Cotton Vest

- Unique 9 oz. FR-treated 100% cotton is certified to ANSI/ISEA 107-2015.
- Reflective striping is ANSI/ISEA 107-2015 Type R Class 2 compliant.
- NFPA 70E and ASTM F1506 compliant.
- 7 front pockets provide lots of options for protecting small tools and gear.
- Concealed snap front.

VF1110 S-4XL



Hybrid™ Welding Jackets: The Best of Both Worlds

FR Cotton & Cowhide Hybrid™ Welding Jacket

9 oz., FR treated cotton on the body keeps you cool with the added durability of rugged split cowhide sleeves. Inside pocket. 30" length.

FRB9-30C/BS S-5XL Royal Blue

F9-30C/BS S-4XL Green

F09-30C/BS S-4XL Orange



Split cowhide sleeves offer durable spark and spatter protection

Convenient scribe pockets

9 oz. FR treated cotton body is a cool and breathable alternative to leather

Snap front and wrists

FRB9-30C/BS

SPOTLIGHT ON...



HYBRID™

Black Stallion® and BSX® hybrid welding jackets offer the perfect combination of durable protection and cool comfort. Rugged leather sleeves shield arms from sparks and spatter, while breathable cotton protects the torso.



AngelFire® Women's Hybrid™ Welding Jacket

Premium grain pigskin sleeves with 9 oz. FR cotton body. Designed and tailored specifically for women. Welder's collar, scribe pocket and interior pockets, adjustable cuff, and waist straps.

BW9C/PS XS-XL Chocolate Brown

AngelFire
Women's Welding
Gear by BSX®



BSX® FR Cotton & Grain Pigskin Hybrid™ Welding Jacket

Premium grain pigskin leather provides maximum protection where it is needed, while the 9 oz. FR cotton body offers breathable comfort. Extended front coverage offers additional protection. Innovative BSX® styling includes stand-up welder's collar, zippered inside pocket, and adjustable waist straps.

BXR9C/PS S-5XL Royal Blue



Hi-Vis FR Cotton & Cowhide Hybrid™ Welding Jacket

Ruggedly durable split cowhide sleeves, with Hi-Vis Orange FR treated cotton body. 2" FR reflective tape, with "X" design on back to alert others when wearer's back is turned. CableNotch™ pass-through flap on back for fall harness assembly. 30" length.

JH1012-OR S-4XL Orange

Black Stallion® Leather Welding Garments: Natural

Split Cowhide Welding Jacket

Split cowhide welding jacket features Kevlar® stitching for greater protection against sparks and better abrasion resistance. 30" length.

30WC S-5XL



Corduroy collar provides enhanced durability and extra comfort

Satin-lined shoulders allow for easier on and off



Dual scribe pockets hold welding pencils, soapstones, and paint markers

Gusseted underarms provide a wider range of motion



Adjustable waist snaps provide a more fitted style



Reinforced front and wrist snaps offer durable convenience



Split Cowhide Split-Leg Chaps

Durable side split cowhide with adjustable straps. Kevlar® stitching provides greater protection against sparks and better abrasion resistance.

40WS 40" Length



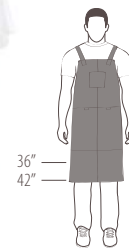
Split Cowhide Split-Leg Bib Apron

Side split cowhide construction for durable protection. Adjustable straps for a custom fit. Kevlar® stitching provides greater protection against sparks and better abrasion resistance.

48SL 48" Length



36A



Split Cowhide Bib Apron

Side split cowhide bib apron with adjustable straps for a custom fit. Kevlar® stitching provides greater protection against sparks and better abrasion resistance.

36A 36" Length

42A 42" Length

Insulation. Essential Protection. Superior Performance.

Split Cowhide Cape Sleeves

Durable split cowhide with protective stand-up corduroy collar.

21CS S-4XL

Satin-lined shoulders for easier on and off

Gusseted underarms provide a wider range of motion



Dual scribe pockets hold welding pencils, soapstones, and paint markers



SPOTLIGHT ON...

COWHIDE LEATHER



Because it offers the right balance of performance and value, cowhide is an excellent leather for welding garments. Cowhide performs very well against sparks and spatter, while offering sufficient suppleness for comfort.



Split Cowhide Welding Bib

Split cowhide is exceptionally durable and naturally resistant to sparks. Kevlar® stitching for extra durability, abrasion resistance, and FR protection. Wear with 21CS for complete protection.

14WB 14" Length Bib

20WB 20" Length Bib

Split Cowhide Cape Sleeve & Bib Combos

21CS split cowhide cape sleeves with split cowhide bib. Bib includes adjustable waist strap. Kevlar® stitching for extra durability, abrasion resistance, and FR protection.

214CS S-4XL Cape Sleeves & 14" Bib Combo

220CS S-4XL Cape Sleeves & 20" Bib Combo

DuraLite™ Premium Grain Pigskin Welding Jacket

Lightweight grain pigskin leather welding jacket features a protective stand-up collar lined with corduroy for comfort, while protecting the neck from sparks. The satin-lined shoulders allow the garment to easily slide on and off. Kevlar® stitching provides greater protection against sparks, and better abrasion resistance for long-lasting wear. 30" length.

30PWC S-3XL Tan

30PWC-BLK M-3XL Black

Thermal Protection in Extreme Environments



Knit Balaclava

Single layer knit sock hood.

- NH100** One Size Nomex® Knit
- KH100** One Size Kevlar® Knit
- PRH100** One Size PBI® Knit



Double Layer Knit Balaclava with Neck Drape

Double layer head protection with single layer circular neck drape.

- NH200** One Size Nomex® Knit
ARC rated; ATPV=8.9 cal/cm²
- KH200** One Size Kevlar® Knit
- PRH200** One Size PBI® Knit



Knit Balaclava with Front and Back Drapes

Single layer knit sock hood with both front and back flap drapes.

- NH300** One Size Nomex® Knit
- PRH300** One Size PBI® Knit



Aluminumized Carbon/Kevlar® Hi-Temp Jacket

19 oz. aluminumized carbon/kevlar® blend. Protects against radiant heat and sheds molten splash.

- 130AHS** S-4XL 30" Length
- 148AHS** S-4XL 48" Length
- 150AHS** S-4XL 50" Length



22 oz. DuPont® Kevlar® Hi-Temp Glove

22 oz. Kevlar® glove offers superior heat protection. Ideal for aluminum extrusion, steel fabrication, and glass manufacturing applications.

- DK114** 14" Length
- DK118** 18" Length
- DK123** 23" Length



Heavy-Duty ARC-Rated Nomex® Knit Balaclava

Double layer Nomex® knit sock hood with front and back flap drapes. NFPA 70E compliant, ARC rated; ATPV=8.9 cal/cm².

- NH400** One Size Nomex® Knit



DuPont® Kevlar® Terry Cloth Hi-Temp Glove with Wool Lining

14" long Kevlar® terry cloth glove provides thermal protection from intense heat and hot, sharp objects. Fully sock lined with wool for comfort and added protection.

- TK114** One Size



TruGuard™ 200 ARC-Rated FR Cotton Balaclava

Single layer protection with ergonomic contoured fit and circular neck drape. Imported. NFPA 70E compliant, ARC rated; ATPV=10 cal/cm².

- AH1520** One Size



Vertex™ Hi-Temp Jumbo Cover Mitt

36 oz. Vertex™ vermiculite-coated fiberglass provides extreme heat protection for short durations. Wire mesh shell.

- WVC1R** One Size



Our High-Temperature gloves, mitts, and other gear are proudly made in the USA in our Southern California factory.



Store It. Transport It. Organize It.



BSX® Extreme Welders Gearpack

Designed inside and out specifically for welders, the BSX® Gearpack includes lots of storage room and accessory/tool pockets.

GB100 15" L x 12" W x 19" H



FREE utility carabiner and lunch cooler included (inside gearpack)

Rivet-reinforced top handle with rubberized grip for sturdy and comfortable transporting



Quick-release padded **HelmetCatch™** makes protecting and transporting your helmet a snap

Padded ergonomic straps allow bag to be worn as backpack



Exterior mesh pocket with top cord lock



NEW & IMPROVED!

New Welder's Toolbag

Redesigned with top-opening zippered flap for quick access to gear. Spacious interior fits welding helmet, jacket, gloves, grinder, tools, and more.

GB150 22" L x 12" W x 16" H



BSX® Helmet Utility Bag

Padded bag protects a welding helmet and expensive lens from bumps and scratches. Zippered inside pocket. Can be worn as backpack.

GB200 16 1/4" W x 21 1/4" H



HEADWEAR

Keep it Cool & Comfortable Under Your Hood



BSX® Cotton Doo Rag

Keep light sparks off your head, even when not wearing your helmet. Absorbent forehead padding. One size fits most.

BCSD-BK



BSX® Cotton Welding Cap

Double layer construction and neck guard provide extra protection from sparks. One size fits most.

BC5W-BK



BSX® Cotton Beanie

One size fits most.

BCSB-BK Black

BCSB-BLU Black/Royal Blue



Patriotic Cotton Beanie

Comfortable cotton offers light protection from sparks. Welding America Together™ logo. One size fits most.

BCT-RWB-WAT



BSX® Helmet Sweatband

Cushioned for comfort. Designed for non-suspension headgear. 2 per pack.

BC5SB-BK



Add to Your Bottom Line with Top-Quality Accessories



Flame-Resistant Industrial Umbrella

Provides needed shade in and around industrial work sites, including where FR is required. Powder-coated aluminum pole. Flexible fiberglass ribs won't warp. Meets requirements of NFPA 701 & California Fire Marshal (CFM). 7'6" high x 6'8" wide.

- UB100** Umbrella Only
- UB50** Tripod Stand
- UB150** Umbrella/Stand Combo

Flame-resistant vinyl ripstop fabric resists tearing



Wind vent increases stability



Tilt mechanism with jam-free push button



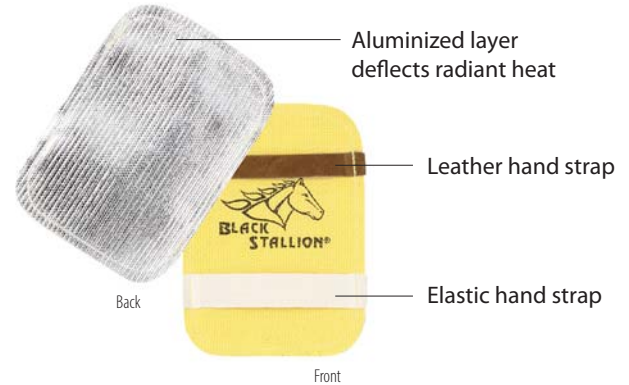
Flexible fiberglass ribs will not warp

Heavy-duty steel tripod stand available

Aluminized Fiberglass Backpad

Double layer of fiberglass provides heat protection for the back of hand.

BP 6" W x 8" H



Aluminized layer deflects radiant heat

Leather hand strap

Elastic hand strap



Made in USA

Heavy-Duty Insulated Backpad

Extra 1/2" layer of fiberglass insulation offers enhanced heat protection. Aluminized outer layer deflects radiant heat.

BP-DX 6" W x 8" H



Front



Made in USA

Carbon Fiber Backpad

Flexible flame-resistant carbon fiber felt under layer; aluminized fiberglass outer layer.

BP-CB 6" W x 8" H



Front

LEATHER WELDING EQUIPMENT ACCESSORIES

Save Money by Extending the Life of Expensive Equipment



Split Cowhide Cable Cover with Snap Closure

1 3/4" diameter opening. Sold by the foot. Also available in 1 1/4" diameter (114).

- 134** 1 3/4" diameter
- 114** 1 1/4" diameter



Split Cowhide Cable Cover with "Hook & Loop" Closure

1 3/4" diameter opening. Sold in 5-foot increments. Also available in 1 1/4" diameter (C114V).

- C134V** 1 3/4" diameter
- C114V** 1 1/4" diameter



Split Cowhide Rod Holder

Includes clasp for belt loops.

RH One Size

Thermal Protection from Sparks & Spatter

Welding blankets shield equipment from molten metal, high heat, sparks, and more



Our welding blankets have been tested and approved to FM Standards (ANSI/FM 4950). When selecting the right blanket for the needed application, it is important to consider the following:

Material Weight

As a general rule, thicker materials will provide longer protection and are recommended for flat surfaces; thinner materials are better for vertical planes.

Stress Relief

Select an uncoated material such as Silica for stress relief applications.

Coated or Uncoated

Coated materials resist abrasion better, while uncoated blankets are more flexible and can be easily draped around equipment.



Use the chart provided below to select the right blanket for the job.

Item#	Weight	Color	Material	Melt Temp.	Thickness	Usage Guidelines	Roll Width	Blanket Sizes
B-WFG18	18 oz.	Tan	Heat Cleaned Fiberglass	1,000°F	.033"	Light Sparks, Vertical Plane Protection Only	40", 60"	6'x6', 6'x8', 10'x10', Custom
B-WFG24	24 oz.				.050"	Sparks, Spatter	40", 60"	5'x6', 6'x6', 6'8', 10'x10', Custom
B-WFG35	35 oz.				.080"	Sparks, Spatter	60"	6'x6', 6'x8', 10'x10', Custom
B-SNF16	16 oz.	Salmon	Acrylic Coated Fiberglass	1,000°F	.016"	Sparks, Vertical Plane Protection Only	38", 60"	Custom only
B-NFG24	24 oz.	Gold	Acrylic Coated Fiberglass	1,000°F	.039"	Sparks, Spatter	40", 60"	6'x6', 6'x8', 8'x8', 8'x10', 10'x10', Custom
B-NFG30	30 oz.				.053"			3'x3', 4'x6', 6'x6', 6'x8', 8'x10', 10'x10', Custom
B-RFG32	32 oz.	Rust	Silicone Coated Fiberglass	1,000°F	0.35"	Sparks, Spatter	60"	Custom only
B-HCL40	3-3.5 oz.	Pearl	Split Leather	n/a	n/a	Sparks, Spatter	n/a	6'x3', 6'x6', Custom
B-SLC18	18 oz.	Tan	Silica	3,000°F	.030"	Sparks, Spatter, Molten Metal	36"	6'x6', 6'x8', 9'x10', Custom
B-SLC36	36 oz.				.050"	Sparks, Heavy Spatter, Molten Metal		6'x6', 6'x8', Custom
B-VEF25	25 oz.	Black	Vermiculite Coated Fiberglass	1,200°F	.054"	Heavy Sparks, Spatter, Slag	60"	6'x6', 6'x8', 8'x8', 10'x10', Custom
B-CBN16	16 oz.	Black	Carbon Fiber Felt	1,800°F	.170"	Heavy Sparks, Spatter, Slag	72"	6'x6', 6'x8', Custom

CAUTION: Temperature and other information for blankets are provided as guidelines only. Applications and conditions vary widely and will impact overall blanket performance. See page 30 for complete disclaimer.

FM APPROVED MATERIALS



Heat Cleaned Fiberglass

Fiberglass offers excellent heat resistance and resists melting up to 1,000°F.

Acrylic Coated Fiberglass

Acrylic coating provides improved tear resistance.

Silicone Coated Fiberglass

Silicone rubber compound provides greater abrasion and tear resistance.

Vermiculite Coated Fiberglass

Vermiculite coating offers improved resistance to direct flame; heat travels across the fabric, not through it.

Silica

Silica cloth has excellent thermal insulation characteristics over a wide temperature range and resists melting up to 3,000° F; it also has excellent chemical resistance and electrical insulation properties.

OTHER MATERIALS

Split Leather

Leather offers inherent fire resistance and natural insulation.

Carbon Fiber Felt

In addition to excellent high heat resistance, felt is easy to cut and can be conformed to complex curves.

Durable & Convenient Protection for Workers, Materials & Equipment

QuickFrame™ Screen & Frame Combos

Our standard Screens and Frames provide a lightweight solution for portable protection of workers and equipment. Protection from sparks, UV rays, and radiation.

- Durable black powder-coated 3/4" **ROUND** tube framing.
- Snap-fit design for quick and easy assembly without tools.
- Saf-Vu™ 14 mil translucent vinyl screen.
- Meets requirements of NFPA 701 & California Fire Marshal (CFM).

QuickFrame™ STANDARD



Snap-Fit Design for Tool-Free Assembly



Stable Square Base



Standard Sizes	FR Translucent Vinyl						FR Canvas		Frame Only
	Orange	Blue	Yellow	Shade 8	Green	Clear	Orange	Olive Drab	
	14 mil.	14 mil.	14 mil.	14 mil.	14 mil.	16 mil.	40 mil.	12 oz.	
6'X6'	64-5186	64-5156	64-5196	64-5176	64-5166	64-5136	64-5146	64-6166	64-7166
6'X8'	64-5188	64-5158	64-5198	64-5178	64-5168	64-5138	64-5148	64-6168	64-7168
6'X10'	64-5180	64-5150	64-5190	64-5170	64-5160	-	-	64-6160	-

Heavy-Duty QuickFrame™ Screen & Frame Combos

Our Heavy-Duty Screens and Frames provide a durable and stable solution for mobile and semi-permanent protection of workers and equipment. Protection from sparks, UV rays, and radiation.

- Extra durable black powder-coated 1" **SQUARE** tube framing.
- Sturdy platform legs provide enhanced stability.
- Snap-fit design for quick and easy assembly without tools.
- Double-hinged connector system provides multiple multi-panel configurations and allow for close-flat storage.
- Saf-Vu™ 14 mil translucent vinyl screen.
- Meets requirements of NFPA 701 & California Fire Marshal (CFM).

QuickFrame™ HEAVY DUTY



Snap-Fit Design for Tool-Free Assembly



Stable Square Base



Standard Sizes	FR Translucent Vinyl					FR Canvas		Frame Only
	Orange	Blue	Yellow	Shade 8	Green	Olive Drab		
	14 mil.	14 mil.	14 mil.	14 mil.	14 mil.	12 oz.		
6'X6'	64-5186SQ	64-5156SQ	64-5196SQ	64-5176SQ	64-5166SQ	64-6166SQ	64-7166SQ	
6'X8'	64-5188SQ	64-5158SQ	64-5198SQ	64-5178SQ	64-5168SQ	64-6168SQ	64-7168SQ	

Screen material, roll goods, strip curtains, and QuickFrame™ accessories also available. Contact a customer service rep today for more information.

Our Screens & Frames Ship for Less

Smaller packaging saves you money on shipping costs and requires less inventory space allocation.

NEW Our UPS-friendly packaging

Competitor's packaging is taller than 5 feet, resulting in extra shipping charges



Sell More in Less Space

Compact Screens & Umbrellas display available for qualified accounts. Call today.

MD1010 29"L x 29"W x 27.5"H



MD1010

Increase Branch Profits with Innovative Display Systems



NEW ActionHands™

Our NEW ActionHands™ are an effective tool for attracting customers to your glove display. Available for most of our top-selling styles and compatible with most display systems.

- 66-1046** For Gridwalls
- 66-1047** For Pegboards
- 66-1048** For Slatwalls

Our innovative and creative point-of-purchase display systems help you sell more Black Stallion® and BSX® gear. We partner with qualified accounts for FREE store planogram evaluations and custom merchandising displays. Call today.

Single-Sided & Double-Sided Mobile Floor Displays

Double-sided "Gear Station" and single-sided BSX® mobile floor rack systems available to qualified distributors.

- 64-9115** Double-Sided Mobile Floor Display
Appx. 34" W x 32" D x 74" H (with sign)
- 64-9111** BSX® Single-Sided Mobile Floor Display
Appx. 40" W x 14" D x 66" H
(with arms and sign)



64-9115



64-9111



NEW Single Rod Countertop Display

Countertop display provides merchandising opportunities directly at the customer counter. Holds all of our glove styles, except long cuffs.

- 66-1031** 8.25" W x 14.5" H



Countertop Spinner Display

Holds up to 48 pairs of Drivers, Mechanics, and Work Gloves (does not accommodate extended cuff welding gloves).

- 66-1022** Appx. 14" W x 9" D x 31" H



Display Bin

Boost sales by filling bins with Black Stallion® gloves and placing them along the register counter for fast-selling exposure.

- 66-1001** Appx. 18" W x 18" D x 29" H



66-1045

Welding Safety Center

Frame your core welding gear with our dynamic set of two vertical (6" W x 44" H) and one horizontal (56" W x 8" H) rigid signs that fit on virtually all merchandising hooks. Order extra sets for wider or taller displays.

- 66-1045**



BSX® and Black Stallion® Banner

Full color vinyl banner with grommets.

- 66-1036** 48" W x 24" H



BSX® and Black Stallion® Sign

Full color rigid sign with hanging holes.

- 66-1004** 44" W x 8" H

GLOVE SIZING

To determine a glove size, measure (in inches) around the hand with a tape measure across the palm. For best results, measure the dominant hand, the right for a right-handed person, and the left if the person is left-handed. Compare the measurement to the table below to find the corresponding glove size.

SIZE	XS	S	M	L	XL	2XL	3XL
MEN'S	6"-7"	7"-8"	8"-9"	9"-10"	10"-11"	11"-12"	12"-13"
WOMEN'S	6"-7¼"	7¼"-7½"	7½"-7¾"	7¾"-8"	8"-8¾"	-	-

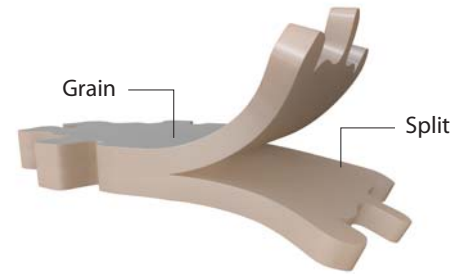
To accommodate extra-long fingers and/or fingernails, please consider choosing one size up.



LEATHER TERMINOLOGY

We choose our Black Stallion® leather carefully...

All welding and work glove leather is not the same, and neither are all welding glove brands. We strive to use only the best leathers and the most appropriate hides for each application.



APPAREL SIZING

Find Your Jacket Size

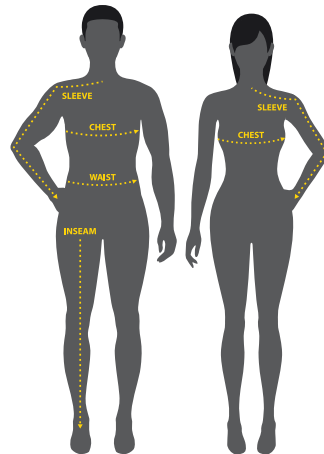
Take the chest measurement by measuring under the armpits around the fullest part of the chest. Take the sleeve measurement by extending arm with elbow bent as indicated in the picture, and measuring from the nape of the neck, around the elbow, and to the wrist. Find your jacket/work shirt size in the table below.

Men's Jackets & Shirts

SIZE	S	M	L	XL	2XL	3XL	4XL	5XL
CHEST	33"-37"	37"-41"	41"-45"	45"-49"	49"-53"	53"-57"	57"-61"	61"-65"
SLEEVE	33"	34"	34"	36"	36"	37"	37"	38"

Women's Jackets

SIZE	XS	S	M	L	XL
CHEST	31"-33"	33"-36"	36"-39"	39"-42"	42"-45"
SLEEVE	27"	28"	29"	30"	31"



Find Your Pant Size

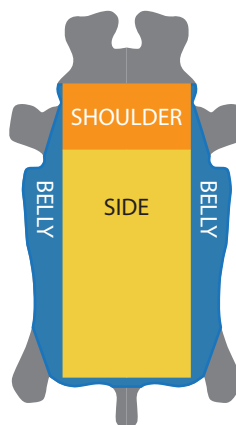
Take the waist measurement where the belt is normally worn. Measure loosely with one finger between the body and measuring tape. Find your pants size in the table below. For custom orders, please also provide the inseam measurement.

Men's Pants

SIZE	32	34	36	38	40	42	44	46	48
WAIST	34"-36"	36"-38"	38"-40"	40"-42"	42"-44"	44"-46"	46"-48"	48"-50"	50"-52"

Disclaimer

Black Stallion® and BSX® gloves, apparel, accessories, screens, blankets, and all other products are warranted against defects in the manufacturing process only. As applications do vary, no use warranty is implied or intended. SPECIFICALLY, BLACK STALLION® DISCLAIMS ALL WARRANTIES INCLUDING BUT NOT LIMITED TO WARRANTIES OF FITNESS FOR A PARTICULAR PURPOSE, AND MERCHANTABILITY, WHETHER OTHERWISE ARISING BY LAW, CUSTOM, USAGE, TRADE PRACTICE, COURSE OF DEALING, OR COURSE OF PERFORMANCE. Working temperatures and recommended applications are presented without guarantee or responsibility on Black Stallion's® part. Information given in this catalog is intended as a guideline only. A careful analysis should be made before selecting protective equipment for each particular work environment and circumstance. It is the buyer's and, ultimately, the user's responsibility to determine if our products will provide adequate protection. As testing and modifications are ongoing in the industry, Black Stallion® reserves the right to change information and recommendations as further knowledge is gained. Black Stallion® shall not be liable for any loss, injury or death or any direct or indirect damages arising out of the use of these products. The contents of this catalog are intended for authorized Black Stallion® distributors. Information in this catalog is subject to change without notice. Contact Black Stallion® for the latest updates and information.



Grain



The external side of the hide where the hair used to be. The most durable and softest layer.

Reversed Grain



The external side of the hide is turned inside out so that it rests against the hand to improve feel and dexterity. The scruffy side of the grain leather is presented on the outside of the glove.

Split



Thicker hides can be split into two or more layers and are denoted by the place on the hide from where it is taken. Split leather is the scruffier internal side of the hide.

Side Split

Side splits come from the back and side portions of the animal. The hide is densest here, yielding a consistently durable high-grade leather.

Shoulder Split

Shoulder splits come from the shoulder area where the hide is less uniform in density and appearance. A shoulder split hide is less durable, but more affordable leather. Shoulder leather can be further classified into Select Shoulder and Shoulder (or Regular Shoulder).

Belly (Economy) Split

The belly area yields the thinnest and least consistent leather.

1...

110	P. 5
1109	P. 13
111R-18	P. 4
111S	P. 5
112	P. 5
113	P. 5
114	P. 26
130AHS	P. 24
134	P. 26
14WB	P. 23
148AHS	P. 24
150AHS	P. 24
15FH-GRAY	P. 14
15FH-MAX2	P. 14
17	P. 10
17A	P. 10
17T	P. 14
19C	P. 9
19FX-BLK	P. 9

2...

20WB	P. 23
214CS	P. 23
21CS	P. 23
220CS	P. 23
2300	P. 13
2300EE	P. 13
2300T	P. 13
24D-BLK	P. 6
24K	P. 7
25	P. 8
25D-BLK	P. 6
25E	P. 8
25G	P. 7
25K	P. 7
26	P. 8
280	P. 5

3...

30PWC	P. 23
30PWC-BLK	P. 23
30WC	P. 22
320	P. 5
35KE	P. 7
35KF	P. 7
36A	P. 22
39	P. 8
39CHMP	P. 8

4...

40WS	P. 22
42A	P. 22
48SL	P. 22

5...

5A	P. 12
----	-------

5B	P. 12
5BE	P. 12
5B-LIM	P. 12
5F	P. 12
5FB	P. 12
5LP	P. 14
5Y	P. 12

6...

6B	P. 12
6DP	P. 12

7...

730	P. 4
750	P. 4

8...

850	P. 4
8FB	P. 12

9...

91	P. 11
91DP	P. 10
93	P. 10
93W	P. 14
94	P. 10
97	P. 11
97CR	P. 11, 12
97K	P. 11
97SW	P. 11
98SB	P. 9
99ACE-PW	P. 14
99PLUS-BLK	P. 9
99PLUS-BLUE	P. 9
9G	P. 11
9GE	P. 11
9P	P. 10
9PB	P. 11
9PW	P. 14

A...

A60	P. 12
AH1520	P. 24
AP1010	P. 19
ARC-Rated Gloves	P. 12

B...

B9C	P. 15
BCSB	P. 25
BCSD	P. 25
BCSSB-BK	P. 25
BCSW-BK	P. 25
B-CBN16	P. 27
BCT-RWB-WAT	P. 25
B-HCL40	P. 27
Blankets	P. 27
BM88	P. 8

B-NFG24	P. 27
B-NFG30	P. 27
BP	P. 26
BP-CB	P. 26
BP-DX	P. 26
B-RFG32	P. 27
BS50	P. 4
B-SLC18	P. 27
B-SLC36	P. 27
B-SNF16	P. 27
BT50	P. 6
BT88	P. 6
B-VCF25	P. 27
BW9C	P. 15
BW9C/PS	P. 21
B-WFG18	P. 27
B-WFG24	P. 27
B-WFG35	P. 27
BX9-19S-BK	P. 15
BX9-19S-RB	P. 15
BX9C	P. 15
BX-KK-18T	P. 15
BXRB9C	P. 15
BXRB9C/PS	P. 21

C...

C114V	P. 26
C134V	P. 26
CF2215-GY	P. 19
CF2215-NV	P. 19
CF2215-RB	P. 19
CF2215-ST	P. 19
CF2216-GY	P. 19
CF2216-NV	P. 19
CF2216-RB	P. 19
CF2216-ST	P. 19
CF2217-NV	P. 19
CF2217-ST	P. 19

D...

Dipped Gloves	P. 13
Display Systems	P. 29
Distributor Support	P. 29
DK114	P. 24
DK118	P. 24
DK123	P. 24
Drivers Gloves	P. 10-11

F...

F2-30C	P. 16
F9-18S	P. 17
F9-20B	P. 16
F9-218S	P. 17
F9-21CS	P. 16
F9-223S	P. 17
F9-23S	P. 17
F9-24B	P. 16
F9-30C	P. 16
F9-30C/BS	P. 21
F9-32CA/PT	P. 17

F9-32P	P. 17
F9-36C	P. 16
FB2-30C	P. 16
FD14-32P	P. 19
FD14-34P	P. 19
FL9-30C	P. 16
FN9-30C	P. 16
FN9-32CA/PT	P. 17
FN9-32CA-PT-RTT	P. 17
F09-30C	P. 16
F09-30C/BS	P. 21
FR9-30C	P. 16
FRB9-30C/BS	P. 21
FS7-KHK	P. 18
FS8-DNM	P. 18
FTL6-GRY	P. 18
FTL6-LIM	P. 18
FTL6-NVY	P. 18
FTL6-ORA	P. 18
Frames	P. 28

G...

GB100	P. 25
GB150	P. 25
GB200	P. 25
GC1135	P. 13
GC2030	P. 13
GC2036	P. 13
GD1611	P. 11
GD1614	P. 11
GM1510	P. 8
GR1135	P. 13
GR4130	P. 13
GR4140	P. 13
GS1321	P. 5
GS1715	P. 4
GW101	P. 14
GW1010	P. 14
GX100	P. 9
GX1010	P. 9
GX1215-HG	P. 9
GX3020	P. 9

I...

i17	P. 10
i17T	P. 14

J...

JF1012-LM	P. 20
JF1012-OR	P. 20
JF1117	P. 20
JF1331-BK	P. 18
JF1332-OR	P. 18
JF4312	P. 20
JH1012-OR	P. 21

K...

KH100	P. 24
KH200	P. 24

L...

LS50	P. 15
------	-------

M...

Mechanics Gloves	P. 9
MIG Gloves	P. 8

N...

NH100	P. 24
NH200	P. 24
NH300	P. 24
NH400	P. 24

P...

PF2220	P. 19
PF2221	P. 19
PRH100	P. 24
PRH200	P. 24
PRH300	P. 24

R...

RH	P. 26
----	-------

S...

Screens & Frames	P. 28
Stick Gloves	P. 4-5

T...

T50	P. 6
TF1211-LM	P. 18
TF1211-OR	P. 18
TIG Gloves	P. 6-7
TK114	P. 24

U...

UB100	P. 26
UB150	P. 26
UB50	P. 26

V...

VF1110	P. 20
--------	-------

W...

Welding Blankets	P. 27
Welding Screens	
& Frames	P. 28
WF2110	P. 19
WF2112	P. 19
Winter Gloves	P. 14
WL350	P. 14
WVC1R	P. 24



Black Stallion® Industries

10747 Norwalk Blvd., Santa Fe Springs, CA 90670

Call 800.527.3826 562.777.1588

Fax 800.738.2690

Email cs@revcoindustries.com

www.BlackStallion.com